

Bethesda Christian Academy

“Developing the Mind; Improving the Heart”



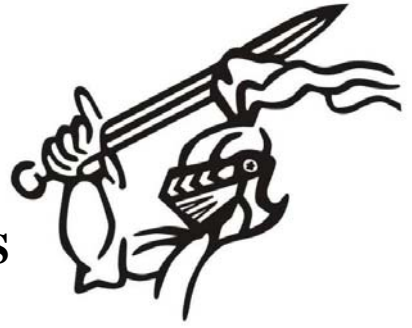
Re-Registration Checklist '10

In an attempt to communicate as effectively as possible, a re-registration check list has been created. Simply mark each item as it has been completed to ensure that your registration process can be considered complete. **Return re-registration packets to the office between the hours of 7:30 am and 8:30 am Jan. 19-22.** Students will not be admitted to the academy until all needed forms and fees have been received in the academy office.

- _____ 2010-2011 Re-Registration Form Has Been Completed And Returned.
- _____ \$275 Re-Registration Fee Has Been Attached To The Re-Registration Form.
- _____ FACTS Update and Registration Form Has Been Completed
 - Re-register with FACTS by going to the academy website at bcacrusaders.org. Click on “pay tuition on line” and complete the 4 step re-registration process.
 - Or complete FACTS Invoice Form (obtain document from office)
- _____ Tee-Shirt Order Form Has Been Completed And Returned.
 - Choose the correct tee-shirt size for the 2010-2011 school year.
 - Tee-shirt sizes run on the small side.
- _____ All Current School Accounts Are Up To Date.

RE-REGISTRATION PACKETS (including this checklist) may be turned in to the academy office, January 19-22, between the hours of 7:30 am and 8:30 am.

**2010-2011 RE-REGISTRATION
FOR
BETHESDA CHRISTIAN ACADEMY STUDENTS**



STUDENT NAME: _____
GRADE FOR 2010-2011: _____
ADDRESS: _____
PHONE: _____ E-MAIL: _____

HOME CHURCH: _____
RE-REGISTRATION FEE OF \$275 IS ATTACHED: (check #) _____

All school accounts (except for field trips) must be up to date before registration for the new year can be completed. Spaces will not be held for delinquent accounts.

Forms will be accepted beginning January 19th. Spaces not reserved by January 25th will be available to the public.

BCA will continue to use the FACTS tuition management system. Go to the academy website at www.bcacrusers.org and click on "pay tuition on line" to complete your FACTS re-registration. It is a 4 step process. If you need help, please contact the academy office.

Please indicate the payment plan you will follow for 2010-2011:

- Full payment for the year will be made by August 1, 2010. Payment is made to BCA.
- Tuition will be paid in 12 monthly payments beginning June 1, 2010 and ending May 1, 2011. Payments will be made to FACTS.
- Tuition will be paid in 11 monthly payments beginning June 1, 2010 and ending May 1, 2011 with January 2011 being tuition free. Payments will be made to FACTS

BCA hires personnel based on student enrollment as of May 31 of each year. If you should withdraw your student after tuition payments begin in June, tuition payments are non-refundable.

Full time after school students will need to make after school payments to FACTS. We will adjust your monthly tuition in September to reflect this additional \$159 after school charge per month. Part-time after school payments will be made directly to the academy.

My child will attend after school on a full time basis.

My child will attend after school on a part time basis and payments will be made to BCA.

Parent Signature _____ Date _____

SCHEDULE OF FEES FOR 2010-2011

REGISTRATION FEE

A yearly, non-refundable registration fee of \$275 is due with the registration or re-registration form.

TUITION RATES

Non-refundable 12 month tuition rates:

Elementary tuition (K-5)	\$468 per month	\$5615 per year
Middle school (6-8)	\$519 per month	\$6222 per year

Non-refundable 11 month tuition rates:

Elementary tuition (K-5)	\$511 per month	\$5615 per year
Middle school (6-8)	\$566 per month	\$6222 per year

BCA hires personnel based on student enrollment as of May 31 of each year. If you should withdraw your student after tuition payments begin in June, tuition payments are non-refundable.

TUITION

Each student's tuition fee covers monthly tuition payments, textbooks, technology fee, one yearbook, a BCA t-shirt, cultural arts activities for elementary students, or the cost to attend the annual middle school retreat.

BCA tuition payments are handled by FACTS Tuition Management Services. All families, except for those who pay for the entire year, are required to sign up with FACTS. Each year there is an enrollment fee for this service. Three payment options are offered to families:

1. You may select to receive an invoice for the payment. Families who are invoiced must have the payment to FACTS by the first day of each month or it will be considered late.

2. You may have your bank account drafted on either the 5th or the 20th of the month.

3. The third payment option is a credit card option. If you wish to use your credit card, you will be charged the convenience fee for using the card in the addition to the monthly tuition payment.

If you desire to receive an invoice for tuition payments, you will need to pick up a registration form in the academy office, complete the form and return to the academy office. If you are having payments drafted from your bank account, you will need to register on the BCA website – bcacrusaders.org. You will select Pay Your Tuition and complete the four step process. Once that is completed, BCA will go in and enter the

financial information – yearly tuition fee and monthly payment amount - during the last part of April. The yearly FACTS registration fee will be drafted from your account in May. If you desire to use a credit card, you will need to obtain information from the academy office.

Tuition payments begin on June 1st. Families who have completed registration by May 15, 2010 may have the option of making tuition payments for either 11 or 12 months. The twelve month option begins on either June 1st, 5th or 20th and ends on either May 1st, 5th or 20th. The eleven month option begins on either June 1st, 5th or 20th and payments are made on that same date in July, August, September, October, November, December, February, March, April and May (no January payment).

Families who register after May 15th will talk with the academy administration to determine the number of monthly payments to be made.

Families who register after August 1st will pay the registration/re-registration fee and the first month's tuition during the month in which they register

DISCOUNTS

Discounts for BBC members or for families with siblings:

* Members of BBC receive a 6% discount in tuition. If a BBC family has multiple children, each child receives the 6% discount in tuition. (\$5279 per year for elementary, or \$440 per month if making 12 payments; or \$5849 per year for middle school or \$488 per month if making 12 payments.

* If a non BBC family has multiple children, the oldest child pays full tuition. Siblings entering BCA after August 2008 receive a 6% discount (ex. For elementary: oldest child \$468, Second elementary child \$440 , third elementary child \$440; or \$519 for a middle school oldest child, \$488 for a middle school sibling, and \$440 for an elementary sibling – these rates are based on a 12 month payment plan).

* Siblings attending the academy prior to August 2008, will continue to receive the discounts which were in effect prior to August 2008.

AFTER SCHOOL

* Full time elementary after school fees will be \$159 per month beginning in September and ending in May. Full time students will have their after school fees collected by FACTS.

* Weekly rates are \$40 per week. If a student attends three or more days during the week, they will be charged for the entire week. The daily rate is \$9 per day.

* Middle school students in need of after school care will be charged a weekly or daily fee. If a student attends after school three or more days during the week, they will be charged \$40 for the week. The daily rate is \$9 per day.

* Part time students and middle school students should pay for after school at the end of the week in which the services are provided.

FINE ARTS PROGRAM

- * Band students will be charged a \$45 band fee which will be due October 1. This provides resources to purchase additional music and school owned instruments.
- * Students participating in sports will pay a \$45 fee per sport. The athletic director will determine the date these fees are due.

ADDITIONAL EXPENDITURES

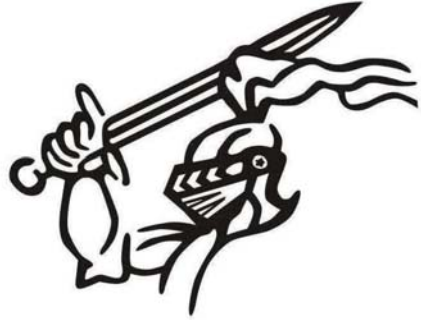
- * Hot lunch will be provided each day at a cost of \$2.75 per day.
- * Each elementary class may take three field trips per year. When taking field trips more than two hours from the academy, transportation may be chartered which will increase the cost of the trip? The cost ranges from \$50 in kindergarten to \$150 in fifth grade. At the beginning of the school year, each family will be provided with a list of field trips for the upcoming year. You will be asked to indicate which trips you will attend and pay a deposit for these trips.
- * Middle school students will attend a Middle School Retreat and one major overnight field trip. The cost of the overnight field trip is projected to be between \$150 and \$200.
- * Each family is expected to support the annual fundraising program by raising \$250 which is used to provide additional educational resources for BCA students. If you would like to have this fee deducted through FACTS (\$21 per month), please inform the academy office.
- * Optional school pictures are available twice a year.

Bethesda Christian Academy

2010-2011 School Calendar

August

10 Teachers return to school
12 Open House
16 First day of school



September

6 School closed – Labor Day

October

15 School closed for students – teacher work day
18 School closed for staff and students

November

22-23 School closed for students –ACSI Convention
24-26 School closed for Thanksgiving Break

December

17 School dismisses at noon for Christmas Break

January

3 Staff returns to school
4 Students return to school
17 School closed – Martin Luther King Jr. Holiday

February

21 School closed for students and staff

March

14-15 Winter Break for students and staff
16 Winter Break continues for students – teacher workday

April

18-22 School closed for Easter Break

May

27 Last day of school – dismissal at noon
30 Holiday
31 Teacher workday

June

1 Teacher workday

Growing Crusaders

BCA Family Discount Procedures

Joseph Adams said, "There are obviously two educations. One should teach us how to make a living and the other how to live." I am honored to be a part of a learning community that feels our job is to work together to train students to be competent, solid Ambassadors for Christ. The School Board of Bethesda Christian Academy desires to continue offering, "Growing Crusaders" for the 2010-2011 year. If you refer a new family to BCA, you may receive a \$100 discount on your own tuition for each new family who enrolls at BCA.

To receive this discount the current family must:

- A. Be responsible for the new family's enrollment by introducing them to the school in some fashion: by inviting them to a tour or other event or by encouraging them to stop by the school or call for an application packet. The new family will need to list the name of the family who referred them to BCA at the top of their student application.
- B. Complete a Finder's Discount Card and submit it to the office.

Once a new family is enrolled for a month, you will receive a \$100 credit for their full-time status. If the new family enrolls mid-year, you will receive a pro-rated credit based on the percentage of time the family is enrolled.

BCA will only be able to honor the first name listed on each new family application, so go spread the good news about the best Christian school in the triangle.

\$100 Tuition Discount



New Family Finder's Discount

- Yes, I was a current BCA family who introduced this family to Bethesda Christian Academy by giving them information about the school, inviting them to a tour, inviting them to visit the school, inviting them to an event or encouraging them to pick up an application packet.

Your Name: _____

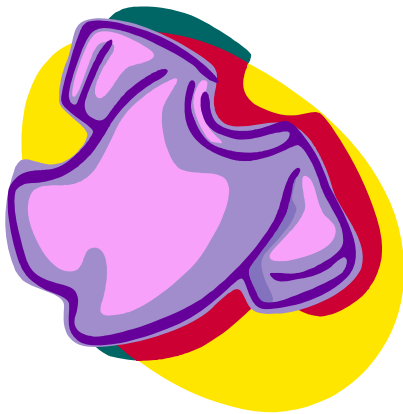
Name of New Family: _____

BCA Order Form

Bethesda Christian Academy is partnering with Christian families to inform the student's mind, effect the student's heart and increase the student's personal talents as they seek to become Ambassadors for Christ. We are excited about the families that God has brought to the academy. As a way of saying thank you for partnering with us, the school board would like to give each returning or new student a school tee-shirt during the 2010-2011 Back To School Extravaganza. Please indicate what size shirt your child will need for the 2010-2011 school year. We need for you to return this order form with your registration information. Parents will be able to pick up their tee-shirts in August.

SCHOOL TEE-SHIRT ORDER

SHORT SLEEVE SCHOOL TEE-SHIRTS



Youth 6-8 _____

Youth 10-12 _____

Youth 14-16 _____

Adult Small _____

Adult Medium _____

Adult Large _____

Adult XL _____

CHILD'S NAME: _____

GRADE FOR 2010-2011 SCHOOL YEAR: _____